

Author Correction: High expression of MMP14 is associated with progression and poor short-term prognosis in muscle-invasive bladder cancer

J.-F. WANG, Y.-Q. GONG, Y.-H. HE, W.-W. YING, X.-S. LI, X.-F. ZHOU, L.-Q. ZHOU

Department of Urology, Peking University First Hospital, Beijing, China

Correction to: Eur Rev Med Pharmacol Sci 2020; 24 (12): 6605-6615–DOI: 10.26355/eurrev_202006_21646-published online on June 25, 2020.

After publication, the authors have applied some corrections to the galley proof:

- In Table II, data displayed in MMP14 expression between Low and High group was inverted. This correction does not involve any statistical data modification and does not affect the conclusions of the article.

The correct table display should be as follows:

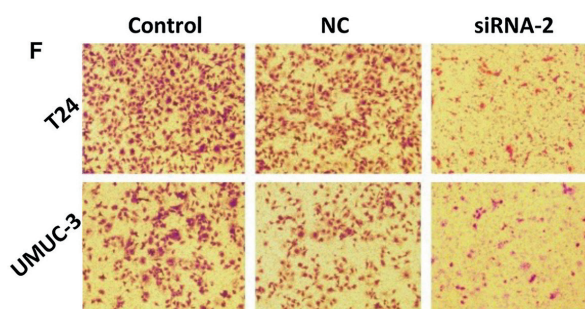
Table II. Expression of MMP14 in BC tissues compared with adjacent normal tissues in 113 patients from Peking University First Hospital.

Sample	Number of patients	MMP14		p
		Low (%)	High (%)	
NMIBC	31	0 (0)	31 (100.0)	<0.001*
Adjacent normal tissues	31	22 (71.0)	9 (29.0)	
MIBC	82	6 (7.3)	76 (92.7)	<0.001*
Adjacent normal tissues	82	57 (69.5)	25 (30.5)	

NMIBC, non-muscle-invasive bladder cancer. MIBC, muscle-invasive bladder cancer. MMP14, matrix metalloproteinase 14. Paired Chi-square test. * $p < 0.05$.

- In Figure 4F, the cell invasion image of siRNA-2 group in T24 was misplaced. The authors have adjusted the brightness and contrast appropriately as well.

The correct Figure 4F display should be as follows:



There are amendments to this paper. The Publisher apologizes for any inconvenience this may cause.